

Altaro Hyper-V Backup

Hyper-V Backup in 5 clicks - Hyper Easy, Hyper Fast, Hyper Effective

A powerful Hyper-V aware backup solution that easily backs up Microsoft Hyper-V Virtual Machines. Take the guesswork out of backing up Hyper-V, you won't find an easier to use or quicker to configure solution.

✓ Fully Hyper-V Aware

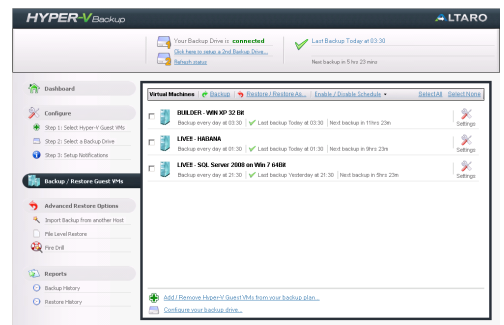
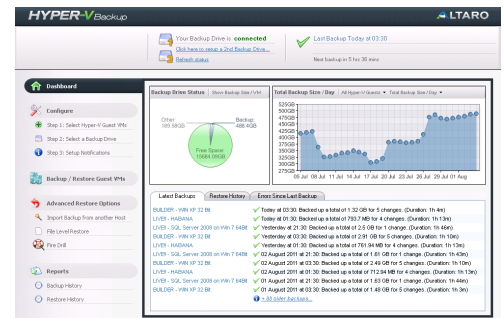
Does all the complex config connections and allows you to back up any instance in 5 clicks or less.

✓ Affordable & Full Featured

Only want to back up and restore one VM instead of the entire host? No problem, the power of choice is yours. Enterprise functionality at an SMB price.

✓ Easy to Use & No Agents Needed

Easy and to the point. Install on Hyper-V Server without installing anything within the virtual machine itself.



ReverseDelta Incremental Technology

ReverseDelta is technology developed by Altaro Software that enables Altaro Hyper-V Backup to only save the changes between each version of a changed file, rather than storing the whole file every time it changes.

Most backup solutions keep the first backup and save the changes (deltas) since that first backup, which, after a few weeks or months can become much more complex to restore.

With ReverseDelta, the most recent backup is always a full file. This means that if you require the latest version of a file, it is possible to access it directly from your backup drive without having to rebuild it from delta files.



ALTARO
www.altaro.com



Altaro Hyper-V Backup



Hyper Easy, Hyper Fast, Hyper Effective

Licensing

Altaro Hyper-V Backup is licensed per the amount of VMs being backed up on each host. There are no CPU sockets fees. Altaro Hyper-V Backup comes in 2 different editions.

Editions

Altaro Hyper-V Backup comes in 2 different editions, Standard Edition and Unlimited Edition. The table below lists the differences between both editions. Apart from these differences both editions are the same.

	Standard Edition	Unlimited Edition
Number of Virtual Machines that can be backed up and restored (per host)	5 Virtual Machines	Unlimited Virtual Machines
MS Hyper-V Cluster Support (CSV Support)		

Supported Environments & Backup Destinations

Hosts:

Windows 2008 R2 (all editions)
Windows 2008 R2 SP1 (all editions)
Windows Hyper-V Server R2 (core installation)

Guest Virtual Machines:

Altaro Hyper-V Backup supports all operating systems that are supported by Microsoft Hyper-V. Altaro Hyper-V Backup needs to be installed on the Hyper-V Host (not within the guest).

Supported Backup Destinations:

USB & eSATA External Drives, NAS & SAN systems, iSCSI, File Server UNC paths & RDX Drives.



ALTARO
www.altaro.com

